

HoldenCopley

PREPARE TO BE MOVED

Hutt Farm Court, Ravenshead, Nottinghamshire, NG15 9AW

£750 PCM

Hutt Farm Court, Ravenshead, Nottinghamshire, NG15 9AW



LOCATION, LOCATION, LOCATION...

This two bedroom ground floor maisonette is situated in the highly popular and sought after location of Ravenshead which is host to many local amenities such as shops, eateries, excellent transport links to both Nottingham & Mansfield City Centre. The property is well presented throughout and would make the perfect home for any couples or working professionals. Internally, the accommodation comprises an inviting entrance hall, a spacious living room with a feature fireplace, a modern fitted kitchen with a range of appliances and two good sized bedrooms serviced by a three piece shower room. Outside to the front of the property is a driveway and single garage providing off road parking.

AVAILABLE NOW!





- Ground Floor Maisonette
- Two Double Bedrooms
- Spacious Living Room
- Modern Fitted Kitchen
- Three Piece Shower Room
- Well Presented Throughout
- Driveway & Garage
- Communal Gardens
- Sought After Location
- 360 Tour Available





ACCOMMODATION

Entrance Hall

24*7" x 14*9" (7.5 x 4.5)

The entrance hall has wood effect and carpeted flooring, a wall mounted radiator, a built-in cupboard and a single door providing access into the accommodation

Living Room

16*0" x 15*1" (4.9 x 4.6)

The living room has carpeted flooring, a wall mounted radiator, coving to the ceiling, a TV point, a wall mounted electric fire, a range of UPVC double glazed windows to the side elevation and a UPVC double glazed bay window to the front elevation

Kitchen

13*1" x 7*2" (4.0 x 2.2)

The kitchen has wood effect flooring, a wall mounted radiator, a range of fitted wall and base units with rolled edge worktops, a stainless steel sink with mixer taps and a drainer, a freestanding cooker, a washer and separate tumble dryer, a fridge freezer, a wall mounted boiler, partially tiled walls and a UPVC double glazed window to the rear elevation

Master Bedroom

11*5" x 11*9" (3.5 x 3.6)

The main bedroom has carpeted flooring, a wall mounted radiator, fitted wardrobes, over the bed storage and a UPVC double glazed window to the front elevation

Bedroom Two

8*6" x 15*1" (2.6 x 4.6)

The second bedroom has carpeted flooring, a wall mounted radiator and a UPVC double glazed window to the rear elevation

Shower Room

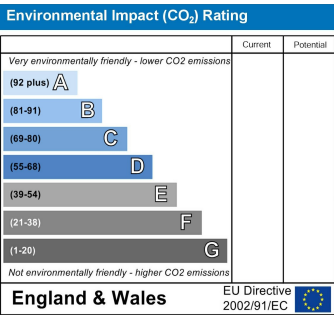
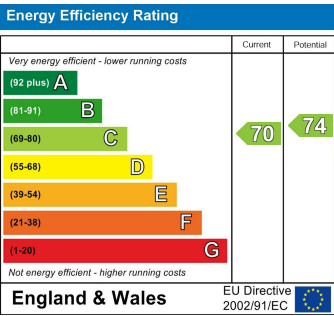
7*6" x 7*2" (2.3 x 2.2)

The bathroom has wood effect flooring, a wall mounted radiator, a pedestal wash basin with taps, a low level flush W/C, a shower enclosure with a wall mounted electric shower, an electric shaving point, partially tiled walls, a built-in cupboard and a UPVC double glazed obscure window to the rear elevation

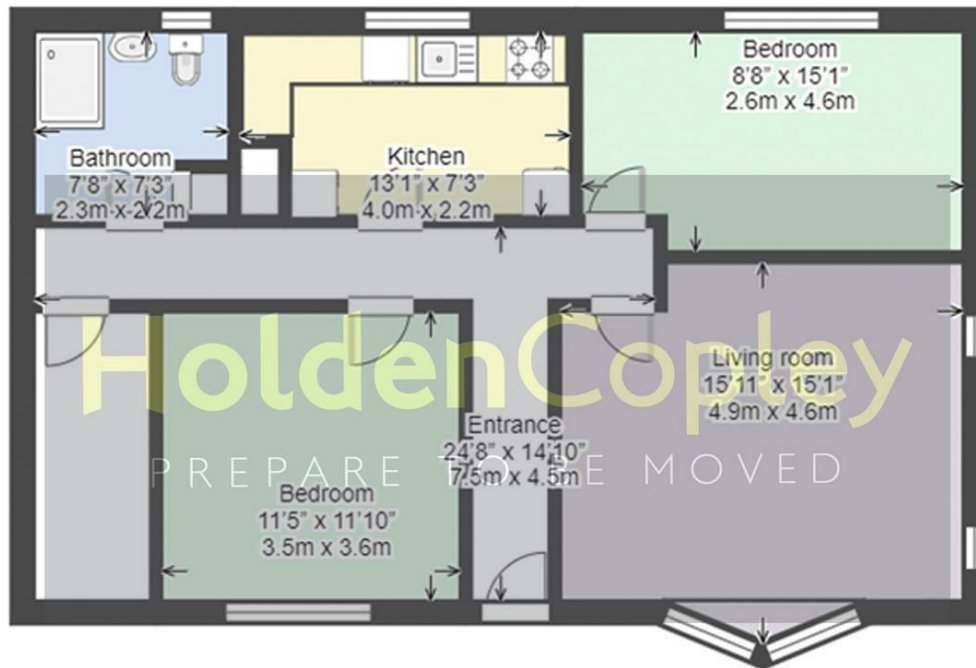
OUTSIDE

Front

To the front of the property are a range of plants and shrubs with a lawned area, communal gardens, pathway leading to the accommodation, a driveway and single garage providing off road parking



Hutt Farm Court, Ravenshead, Nottinghamshire, NG15 9AW



All sizes and areas are approximate and for identification only. Not to scale.
© Holden Copley 2020

01158228800

4 Croft Road, Arnold, Nottingham, NG5 7DX

lettings@holdencopley.co.uk

www.holdencopley.co.uk

Agents Disclaimer: HoldenCopley, their clients and employees I: Are not authorised to make or give any representations or warranties in relation to the property either here or elsewhere, either on their own behalf or on behalf of their client or otherwise. They assume no responsibility for any statement that may be made in these particulars. These particulars do not form part of any offer or contract and must not be relied upon as statements or representations of fact. 2: Any areas, measurements or distances are approximate. The text, photographs and plans are for guidance only and are not necessarily comprehensive. It should not be assumed that the property has all necessary planning, building regulation or other consents and HoldenCopley have not tested any services, equipment or facilities. Purchasers must make further investigations and inspections before entering into any agreement.